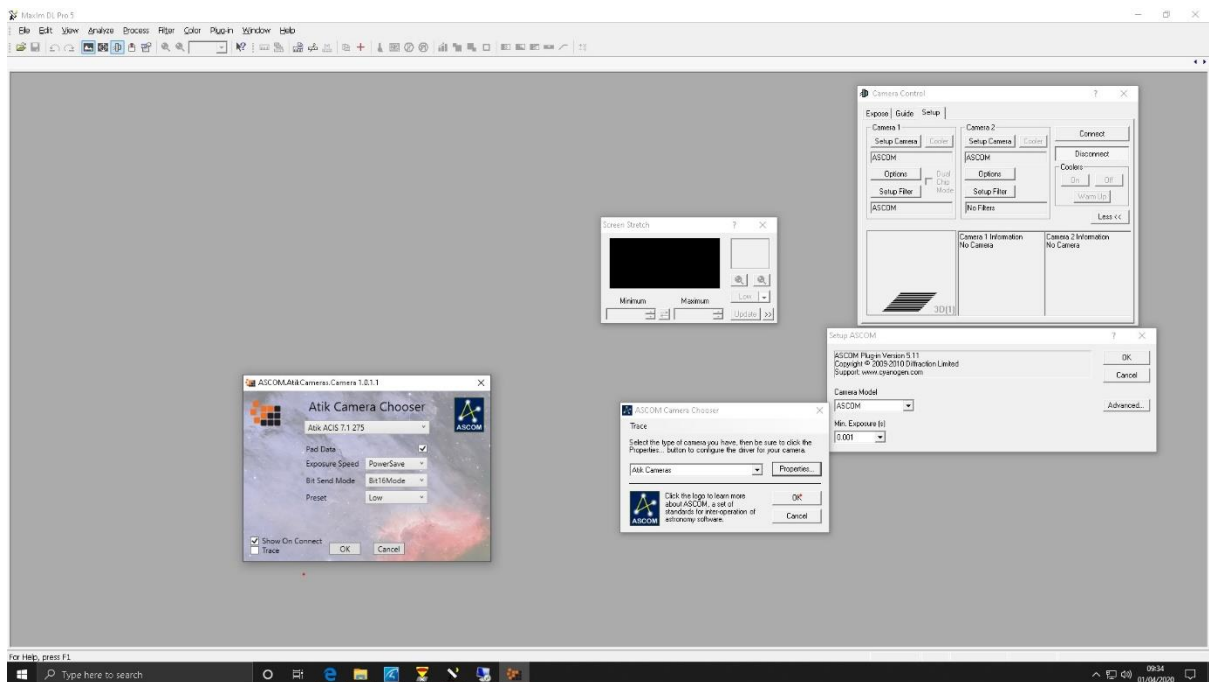


Atik camera ASCOM setup guide.

This guide is intended to direct you through the new Atik camera ASCOM set up procedure.

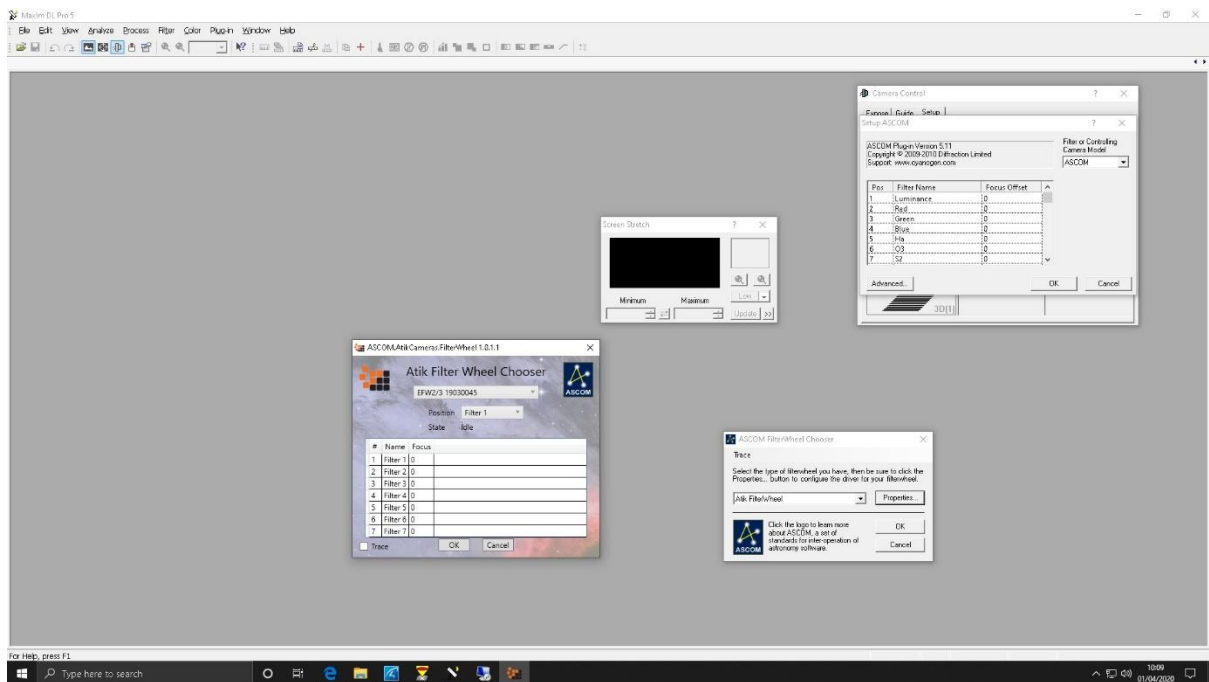
Connect your camera to USB and 12-volt power, launch your chosen capture software, in this case Maxim DL, open the 'camera control window' go to the 'Camera 1' area and select 'setup camera', select 'ASCOM' as your camera type. Click on the 'Advanced button' and select 'Atik Camera' in the 'ASCOM Camera Chooser' the 'ASCOM AtikCameras Camera x.x.x.x.' window will appear, wait a few seconds and your cameras will automatically be found. Select the main camera from the list and select 'OK' to all the open boxes.



The above will need to be repeated for the guide camera and for the filter wheel.

ASCOM Filter wheel setup

This is the same procedure as for the cameras, the final window should show the filter wheel details after a few seconds after being opened.



The 'ASCOM AtikCameras FilterWheel x.x.x.x.' will show the correct number of filters for the camera that you are using, nothing else is required in this window. Filter positions and offsets can be filled in the 'Setup ASCOM' box if required.